

## 6GST SAE MOUNT GLOBAL STANDARD TRASH



Global Pump® Standard Trash pumps are specifically designed to effectively handle a wide range of liquids from water to sewage and sludge that can contain solids and other material.

The model 6GST SAE Mount is capable of achieving maximum flows of 3,000 gpm (681 m<sup>3</sup>/h) and maximum total head of 202' (61.6 m), while handling solids up to 3" (75 mm) in diameter. L<sup>3</sup>/D<sup>4</sup> ratio of the pump is 7.2.

The standard 6GST SAE Mount is SAE flange mounted to a water-cooled, 4-cylinder diesel engine. Alternative drives are available including electric motors.

Global Pump's unique front pullout cartridge seal provides ease of maintenance as it can be quickly changed in the field, thereby reducing downtime and expense.

### FEATURES

Global Pump's rugged, heavy duty pumps are engineered specifically for portable application

Close coupled SAE mount to engine

Industry-best shaft stiffness with extremely low L<sup>3</sup>/D<sup>4</sup> ratio that provides minimal shaft deflection, extended seal life and L10 100,000 hour bearing life

Non-return valve uses only a single moving part to allow full flow with minimal restriction

Standard engine control panel provides preset emergency shutdown protection and allows the addition of automatic level control

Global Pump's unique cartridge seal with biodegradable glycol quench allows the pump to start and run dry

Pump casings are hydrostatically tested to 50 psig (345 kPa) above the peak casing design pressure

Skid-mounted formats with tie downs, lifting bail, and fork pockets

### OPTIONS

Available with a variety of priming systems, including Global's Auto Prime® automatic priming system (compressor-fed venturi priming) or a diaphragm priming system

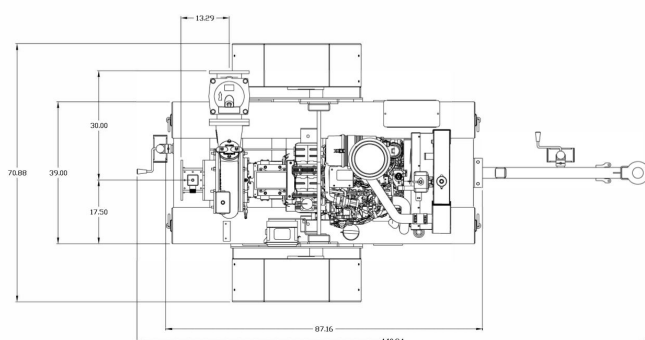
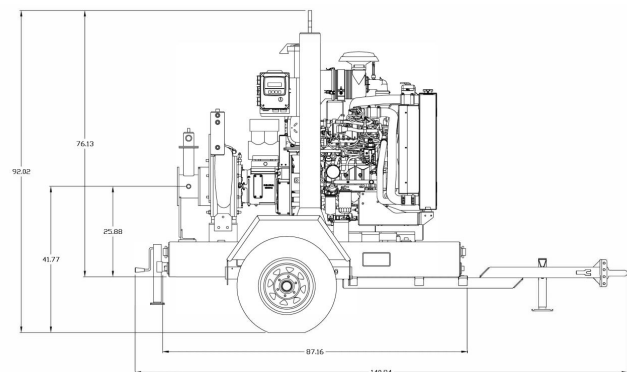
Global Pump's environmental box separates and silences air exhaust and returns liquid to the pump suction

Fuel cubes for extended run times and/or remote location as required

Sound attenuated enclosure options

Hose racks, accessory containers and other custom features available as required

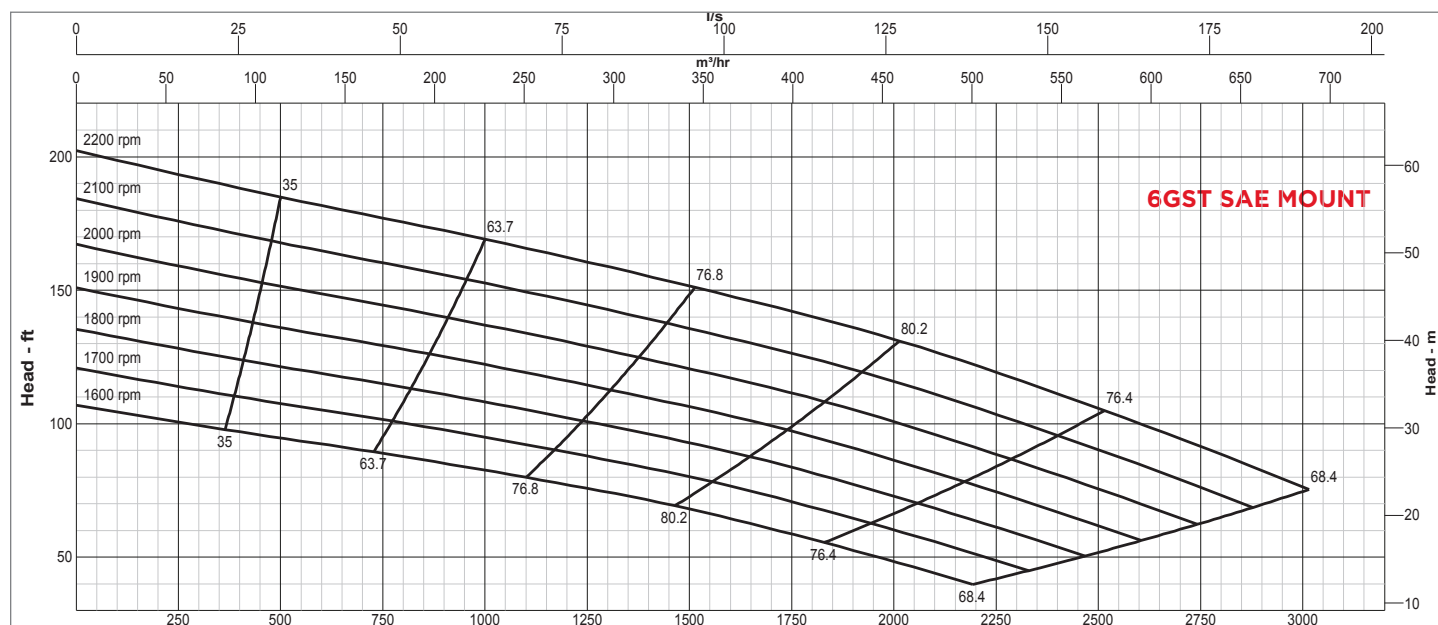
Wide range of suction and discharge fittings including Global Pump's own "QD" Quick Disconnect fittings and accessories

**SPECIFICATIONS**

Connections	6" (150 mm) ANSI Flanges
Max Pump Speed	2,200 rpm
Max Flow	3,000 gpm (681 m <sup>3</sup> /h)
Max Head	202' (61.6 m)
Max Static Priming Lift	28' (8.5 m)
Temperature Limit	160° F (70° C)
Solids Handling Capability	3" (75 mm)
Max Casing Pressure	125 psig (862 kPa)
Fuel Cell	83 gallons (314 liters)
Dry Weight	4,600 lbs

**PUMP MATERIAL**

Casing	Cast iron (CD4MCu is an option)
Impeller	Cast iron (CD4MCu is an option)
Wear Rings	CD4MCu and 316 SS
Bearing Housing	Cast Iron
Bearing Lubrication	Grease
Shaft	431 Stainless Steel
Seal	Cartridge w/Silicon Carbide Faces
Chassis/Fuel Cell	Steel
Non-Return Valve	Nitrile Fitted Cast Iron
Environmental Box (Optional)	Steel

**GLOBAL PUMP**

10162 East Coldwater Road, Davison, MI 48423

Tel: 810.653.4828 Fax: 810.658.0632

**1.866.360.PUMP**[www.globalpump.com](http://www.globalpump.com)

## INDUSTRIAL DIESEL ENGINE

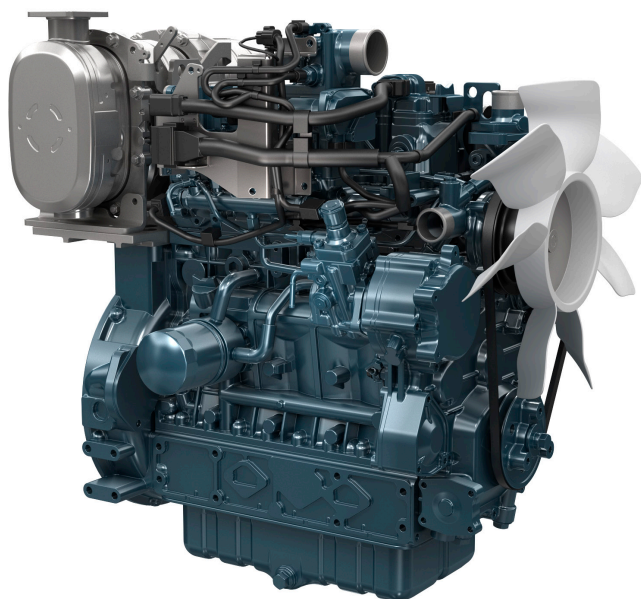
Kubota V3 Series (4-Cylinder)

# V3800-TIE4B



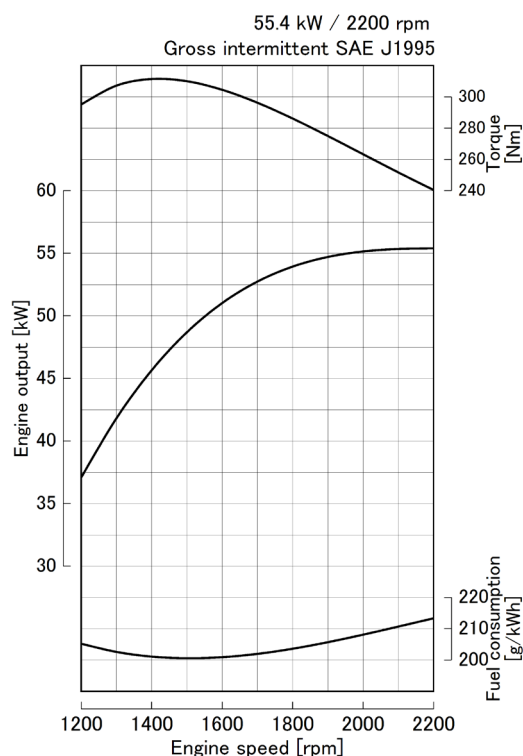
### Rated Power

**55.4 kW @ 2200 rpm**



Photograph may show non-standard equipment.

### Performance Curves



### Features and Benefits

#### Proven Reliability and Technology

The latest technology and strong performance—two things customers expect from Kubota engines. We continue to provide both through the pursuit of excellence in emissions compliance and progress toward fully electronic controlled engines. These key areas allow Kubota to offer flexibility in the products and services we provide to customers worldwide.

#### Clean and Quiet Power

A Common Rail System has made it possible to optimize combustion and create a more durable and quieter engine with higher fuel efficiency. This engine model is available with DOC aftertreatment.

#### Emissions Compliance

Meeting rigid emissions regulations can be a challenge for any company. V3800-TIE4B engines have been designed to comply with stringent regulations: EPA / CARB interim Tier 4 level + EU Stage IIIB level. In addition, innovative emissions solutions, such as the use of aftertreatment units, have also been integrated into the engines.

#### Flexibility

Flexibility is a must when working with customers in different countries who have different engine needs. Since Kubota V3 Series engines have evolved along every step in meeting the requirements of each EPA Tier, we are able to provide our customers worldwide with engines certified for the appropriate emissions regulations. In addition, we have designed aftertreatment units with minimum impact for easy installation.

#### Trust

Kubota V3 Series engines are the ideal solution for your company's global marketing strategy. We continuously strive to meet your needs with the experience and expertise that is your due.

**For Earth, For Life**  
**Kubota**

# V3800-TIE4B

## Engine Specifications

Engine model		V3800-TIE4B
Emission regulation		EPA/CARB Tier 4 + EU Stage IIIB
Type		Vertical, water cooled 4-cycle diesel engine
Cylinders		4
Bore and stroke	mm (in)	100.0 x 120.0 (3.937 x 4.724)
Displacement	L (cu.in)	3.769 (230.0)
Aspiration		Turbocharged + Turbo After Cooler
Aftertreatment		DOC
Rated output / speed *1	kW (HP) / rpm	55.4 (74.3) / 2200
Maximum torque / speed *1	Nm (lb-ft) / rpm	310.0 (228.7) / 1500
Combustion system		Direct injection
Fuel system		Common rail system
Length x Width x Height *2 (without aftertreatment unit)	mm (in)	699 x 617 x 837 (27.5 x 24.3 x 33.0)
Length x Width x Height *3 (with aftertreatment unit)	mm (in)	845 x 617 x 852 (33.3 x 24.3 x 33.5)
Dry weight *3	kg (lbs)	324 (714)

Specifications are subject to change without notice.

DOC: Diesel Oxidation Catalyst

Dimensions and dry weight are according to Kubota's standard specification.

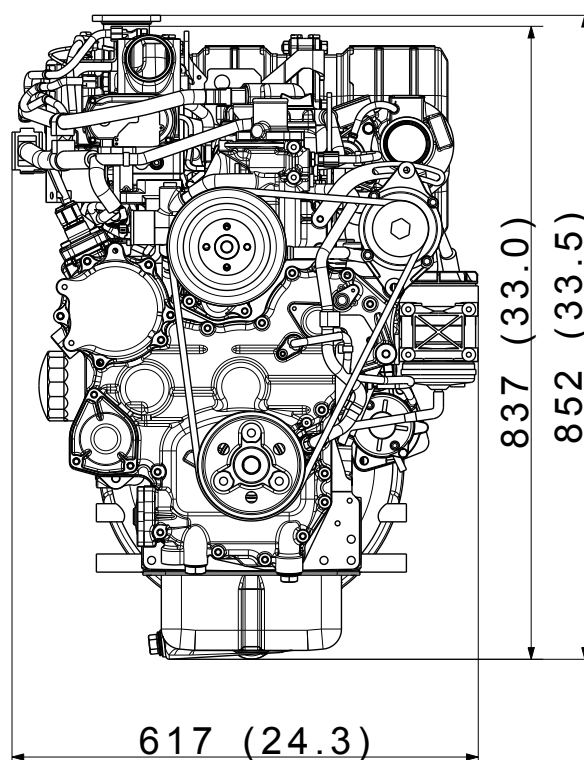
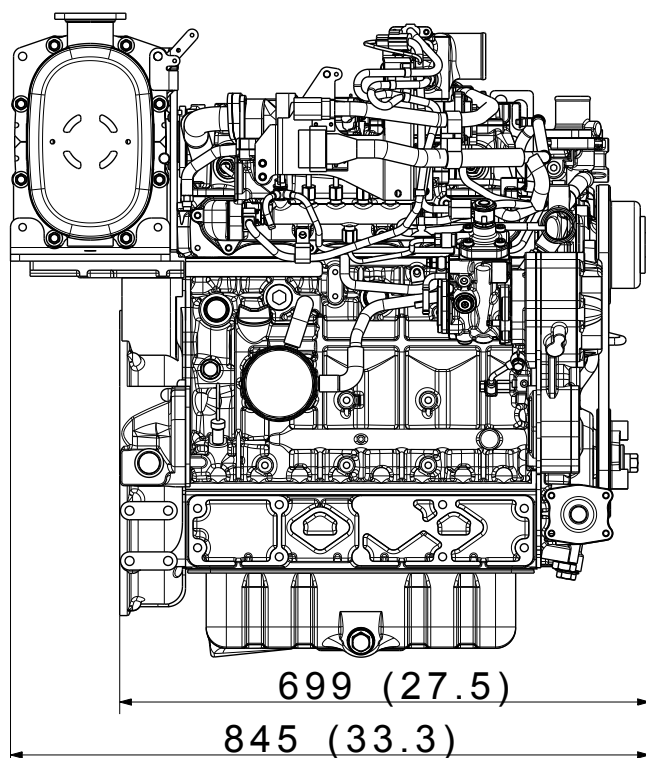
Dimensions and weight depend on completed specifications.

\*1: SAE J1995 gross intermittent

\*2: Exclude cooling fan and exclude aftertreatment unit

\*3: Exclude cooling fan and include aftertreatment unit on engine

## Dimensions



## Kubota Corporation

2-47, Shikitsuhigashi 1-chome Naniwa-ku, Osaka, 556-8601 Japan

<https://global.engine.kubota.co.jp/en/>

ASP-V3800-TIE4B1808-R1-I